

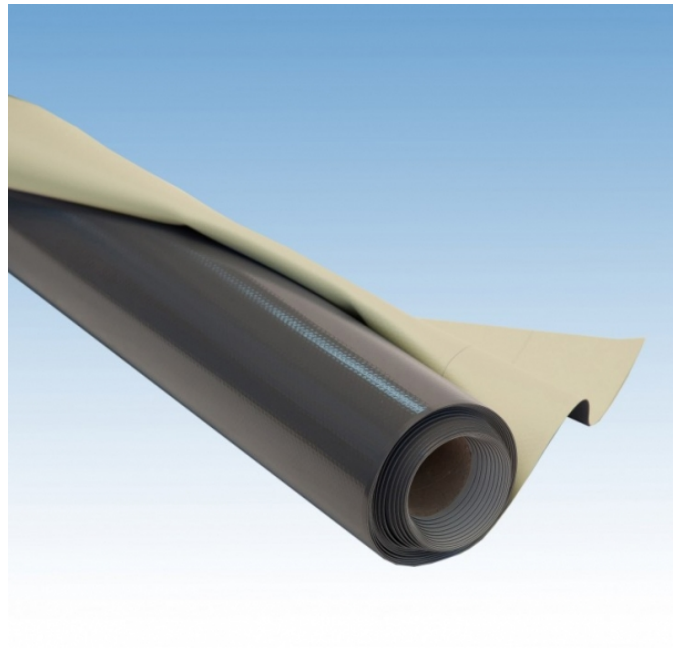
## TEXSALON MP

TEXSALON MP is a synthetic membrane manufactured in TPO modified polyolefin, obtained by co-extrusion, reinforced by a polyester mesh.

The upper light grey layer is featured by a very high resistance to weather and UV rays, while the underlying black layer is punching resistant.

### ADVANTAGES

- Weatherproof and UV resistance
- Resistant to wind stress.
- Mechanical resistance and resistance to punching
- Adaptability to structural movements
- Flexibility at low temperatures
- Excellent welding capacity



### APPLICATION

TEXSALON MP is used for roof waterproofing:

- Exposed roof, with mechanical fastening system
- Independents systems in inverted roofs
- Ballasted with fixed and mobile ballast

### REGULATIONS

- Quality Management System according to the requirements of ISO 9001:2008 standard and environmental management system ISO 14001.
- Complies with standard EN 13956. Certificate CE n° 1085/CPR/0263.

## Synthetic Waterproofing TPO

TEXSA SYSTEMS SLU reserves the right to modify the information contained herein without prior notice and declines all liability in cases of errors produced due to inappropriate use of the product. The values shown in the technical sheet are the mean values from tests in our lab.

## PACKAGING AND STORAGE

	TEXSALON MP 1.2	TEXSALON MP 1.2	TEXSALON MP 1.5	TEXSALON MP 1.5	TEXSALON MP 1.8	TEXSALON MP 1.8	TEXSALON MP 2.0	TEXSALON MP 2.0
Roll length (m)	25	25	20	20	20	20	20	20
Roll width (m)	1.05	2.10	1.05	2.10	1.05	2.10	1.05	2.10
m <sup>2</sup> /roll	26.25	52.5	21	42	21	42	21	42
m <sup>2</sup> /pallet	1207.5	1207.5	966	966	756	756	756	756
Upper layer colour	light grey	light grey	light grey	light grey	light grey	light grey	light grey	light grey
Underside layer colour	Black	Black	Black	Black	Black	Black	Black	Black

Storage: Horizontally, parallel (never crossed) Store in the original packaging in a dry and cool place

## TECHNICAL PROPERTIES

PROPERTIES	Unit	Test Method	TEXSALON MP 1.2	TEXSALON MP 1.5	TEXSALON MP 1.8	TEXSALON MP 2.0
Thickness	mm	EN 1849-2	1.2	1.5	1.8	2.0
Weight	Kg/m <sup>2</sup>	EN 1849-2	1.15	1.40	1.68	1.85
Tensile strength	N/5cm	EN 12311-2	≥ 1100	≥ 1100	≥ 1100	≥ 1100
Elongation to break	%	EN 12311-2	≥ 15	≥ 15	≥ 15	≥ 15
Tear resistance	N	EN 12310-2	≥ 300	≥ 300	≥ 300	≥ 300
Resistance to impact	mm	EN 12691	≥ 450	≥ 800	≥ 900	≥ 1250
Joint peel resistance	N/50mm	EN 12316-2	≥ 200	≥ 200	≥ 200	≥ 200
Joint shear resistance	N/5cm	EN 12317-2	> 600	> 600	> 600	> 600
Cold bending	°C	EN 495-5	≤ - 40	≤ - 40	≤ - 40	≤ - 40
Hydrostatic pressure resistance ( 6 hours at 0.5 Mpa)		EN 1928 (B)	Waterproofing	Waterproofing	Waterproofing	Waterproofing
Dimensional stability	%	EN 1107-2	≤ 0.5	≤ 0.5	≤ 0.5	≤ 0.5
Resistance to artificial weathering	U.V.	EN 1297	No surface cracking	No surface cracking	No surface cracking	No surface cracking
Resistance to root penetration		UNE 13948	No penetration	No penetration	No penetration	No penetration
Resistance to static punching	kg	EN 12730 (B)	≥ 20	≥ 20	≥ 20	≥ 20

## Synthetic Waterproofing TPO

TEXSA SYSTEMS SLU reserves the right to modify the information contained herein without prior notice and declines all liability in cases of errors produced due to inappropriate use of the product. The values shown in the technical sheet are the mean values from tests in our lab.

## Synthetic Waterproofing TPO

TEXSA SYSTEMS SLU reserves the right to modify the information contained herein without prior notice and declines all liability in cases of errors produced due to inappropriate use of the product. The values shown in the technical sheet are the mean values from tests in our lab.