

## PLOTS HAUTE RÉSISTANCE

TEXSA fixed paving support pads are designed to support pedestrian paving and decking (not vehicles) above concrete and asphalt substrates as well as TEXSA waterproofing.

TEXSA offer two types of paving pads : fixed or adjustable.

Fixed paving support pads are available in two heights:

-8 mm

-35 mm

Adjustable paving support pads are composed of two elements:

1. A block head screw and height nut

2. Base

The block head screw is high resistance moulded. The base paving support pads is 20 cm and has resistance fins and two water discharge openings.

Adjustable paving support pads are available in four heights:

-H 40 a 60mm

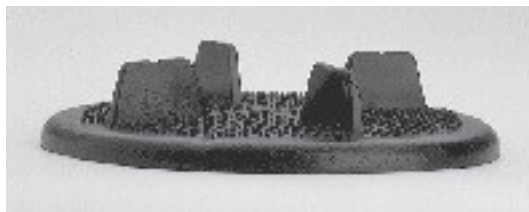
-H 60 a 90 mm

-H 90 a 150 mm

-H 150 a 260 mm

### ADVANTAGES

- Adjustable paving slab support pads can bear several paving slabs, be used to level paving, by means of a fuss free, hand-operated specially designed spanner included in each box an easy installation.
- Height nut is standard for each size of block head screw.
- Shock absorbers are manufactured with high density polyethylene. They are placed upon the block head to maximise stability and improve acoustic.
- Unlike other additional finishing this method of creating additional protection allows water to fully drain beneath paving



### APPLICATION

- Fixed and adjustable paving support pads can be utilised upon concrete, and asphalt substrates as well as TEXSA multi or single ply waterproofing.
- The adjustable paving slab support can be used to level out paving, by means of a fuss free, hand-operated specially designed spanner (included in each bag).
- Bundling in bags allows greater mobility and comfort in the implementation phase of the deck, protecting the supports from the weather and facilitating reuse.

### Acabados de Cubierta Soportes

TEXSA SYSTEMS SLU reserves the right to modify the information contained herein without prior notice and declines all liability in cases of errors produced due to inappropriate use of the product. The values shown in the technical sheet are the mean values from tests in our lab.

## INSTALLATION

- Average number of pads:
  - 7 pieces / m<sup>2</sup> with 40/40 cm paving stones
  - 5 pieces / m<sup>2</sup> with 50/50 cm paving stones
- According to TEXSA Technical Approval, the maximum safe height for a paving support pads is 20 cm.
- High spreader fins can be adjusted for corners and along walling.

## Acabados de Cubierta Soportes

TEXSA SYSTEMS SLU reserves the right to modify the information contained herein without prior notice and declines all liability in cases of errors produced due to inappropriate use of the product. The values shown in the technical sheet are the mean values from tests in our lab.